

SUBSCRIBER COPY

MARCH 2019 118-page Issue

₹ 125

better. interiors

IDEAS AND DESIGN FOR BETTER LIVING

TROPICAL TREASURE

Architect Aamir Sharma and landscape architect Naveen Panuganti join forces to create the StoneLife Super Studio in Hyderabad



BEST BUYS

75 beds, recliners and loungers to relax in style both indoors and outdoors

Also featuring: LOC Design House, MS Design Studio, Wallsmith Architectural Research and Practice, and Zero Studio

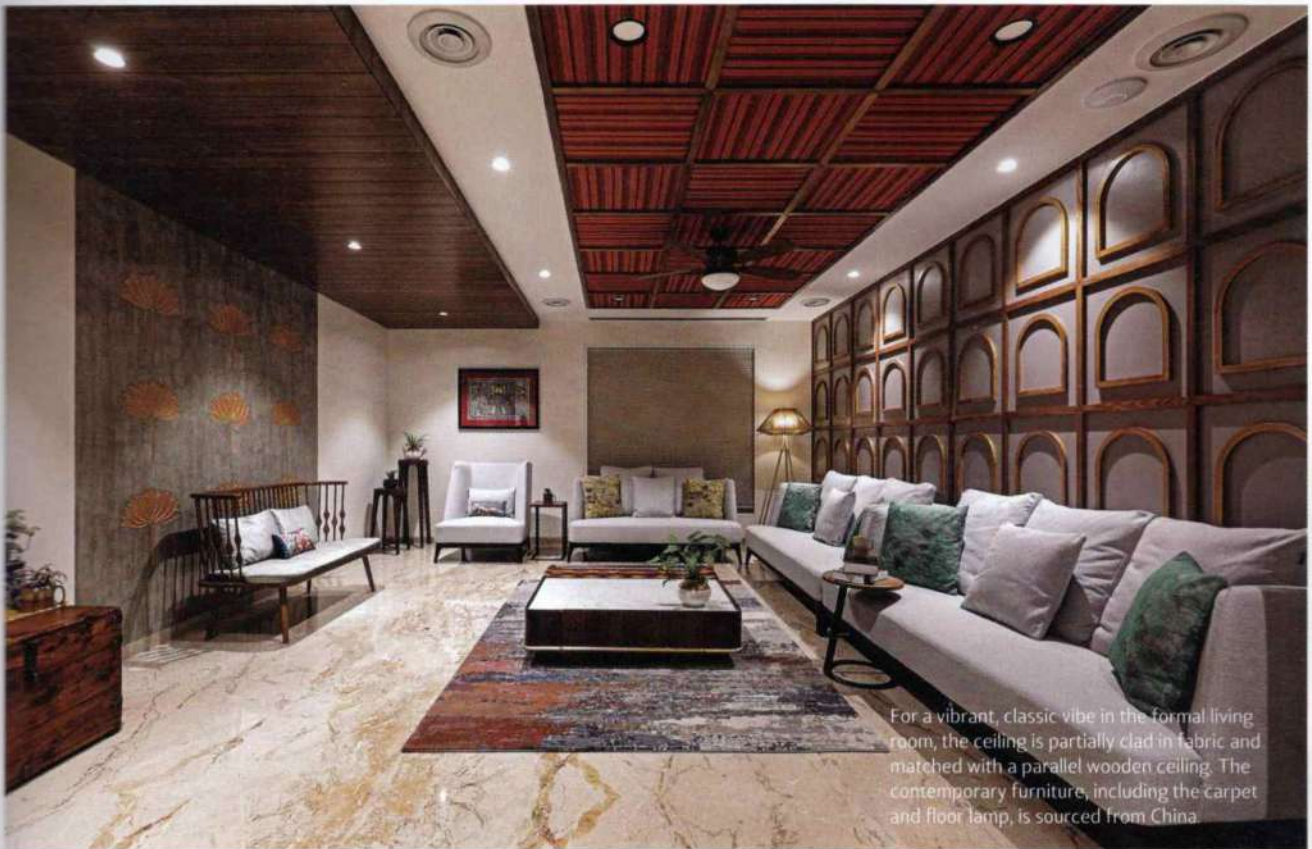
Network **18**



Pride of Place

MS Design Studio marry classic and contemporary design with rich textures and intricate detail creating a home in Vadodara that wholeheartedly embraces luxury and opulence but is immensely tasteful nonetheless.

TEXT: CAROL FERRAO; PHOTOGRAPHS: TEJAS SHAH, COURTESY MS DESIGN STUDIO



For a vibrant, classic vibe in the formal living room, the ceiling is partially clad in fabric and matched with a parallel wooden ceiling. The contemporary furniture, including the carpet and floor lamp, is sourced from China.



In keeping with the client's brief, this space opens up completely to the rest of the house during gatherings or parties. Made from bamboo and glass, the sliding folding doors collapse on both ends of the wall making the formal living room open and wide when needed.



Habitat

To create a warm, inviting ambience at the entrance, a welcome note fashioned out of wood (using CNC machine) and Corten steel is inscribed on the wall.



The porch, which leads to the main door, is designed with leather-finish black granite, Jaisalmer and white stone inlay. Textured exterior walls and a wood-finish ceiling together set the welcoming as well as plush tone of the house.



The black mosaic and a patterned design in Jaisalmer stone serve as a fitting background for the Ganesha sculpture at the foyer.



TOP One of the most challenging design features in the home was the metal screen, designed and fixed on site as a single unit. To match the rustic appeal of the screen, the TV wall is clad with neolith tile in a rusted metal finish. The garden, aka the 'mystic area', provides a serene aura to the home.

ABOVE At the kitchen a neat look is created with white quartz countertop, statuario stone replica tiles on the backsplash and white PU-coated shutters.

the foyer, a gold Ganesha greets you as the black mosaic wall with patterned Jaisalmer stone alludes to the opulent nature of the home you are entering.

You are not let down by the promise of a grand narrative. In the formal living room, you are immediately drawn by the richness of the wall and ceiling textures: cement-finished paint and gold leafing on one wall, grey background and wooden panels shaped like windows inspired from vernacular architecture and finally, the striped fabric ceiling panels designed in harmony with a parallel wood-finished ceiling. These classical elements form a contrasting backdrop for the contemporary furniture, carpet and light fixtures, all of which are sourced from China.

It is the informal living area, designed with the dining and kitchen in linear succession that is the place to be in this home. If the ceiling clad in wood and Nilaya's Sabyasachi wallpaper isn't enough to wow you, the custom-designed metal screen between the dining and living definitely would. "The client wanted to be able to watch the television, which is placed in informal living, from the kitchen and dining area. So we came up with a partial rustic metal screen which is open in a circular form at the centre," informs Shivangi. The double-height dining is charming, with its Italian marble table top, brass pendant lamps and creepers hanging from the first floor.

Habitat



was involved throughout the designing and selection process, made the task smooth for MS Design Studio. "Dharmendra had a taste for materials and design and was very passionate about building his own house. It is unusual and rare but it becomes easy when only one person is involved in the decision-making process... and that's the reason such a big house took only six months for architecture and six for interior execution," mention the architects.

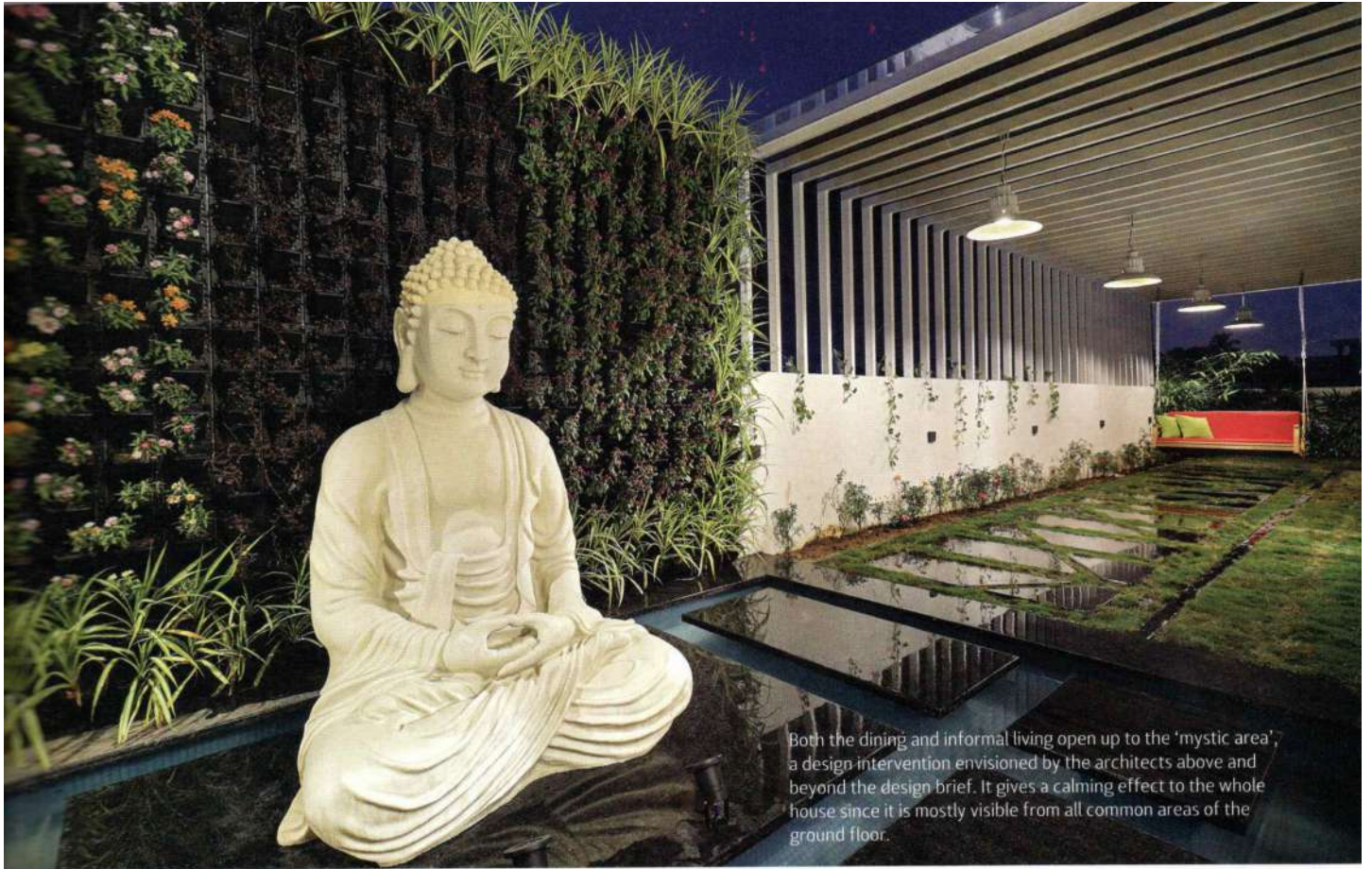
In this home, the design concept marries the familiar with the new. It is your quintessential classic meets contemporary tale but told through the lush textures of Italian marble, yellow Jaisalmer stone, aged metal, wood and plenty of indoor greenery. The combination of these natural materials used in right proportion creates a wonderful ambience. Thus emerged a 5,500-square-foot home with each space given its own distinct spatial quality, from the grand living area on the ground floor to the four bedrooms in the first level.

There is a sense of warmth that greets you as you make your way into the home. At the entrance is a welcoming wall made up of wood and Corten steel, which is visible from the street. Engraved in it is a message of peace with a Buddha statue and carved wood detail that add an aura of calm and beauty. Inside, in

ABOVE An accent feature in the informal living area, the ceiling clad in wood proudly displays the brilliance of Nilaya's Sabyasachi wallpaper in the central panels.

RIGHT The architects have incorporated double-height spaces to connect the interiors with the landscape outside. Here, a casual sitting area has been designed in one corner of the house with a double-height glass facade providing a good view of the garden.





Both the dining and informal living open up to the 'mystic area', a design intervention envisioned by the architects above and beyond the design brief. It gives a calming effect to the whole house since it is mostly visible from all common areas of the ground floor.

CONCEPT: To design a home for a family of six where classic and contemporary design meet through rich textures and an intense material palette.



On the first floor, the lounge space is set up as an open library with books displayed on either side of the sleek-framed skylight. A skylight covered with 12mm clear toughened glass floods the area — and the dining below — with plenty of natural light.

Habitat

A plush lounger/seating area serves as an extension to the dining space. Not only does it provide extra seating during family gatherings, but also acts as a partial screen that hides the dining area from the main entrance's direct view.



Habitat



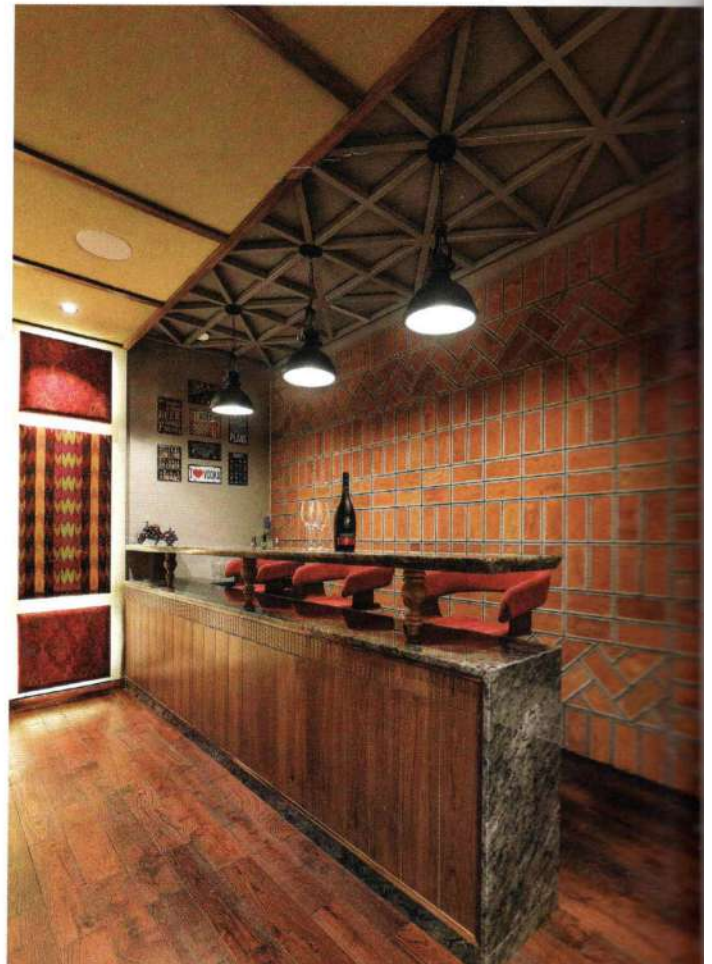
It opens up to the 'mystic area', a serene gardenscape that is also connected to the informal living. "It gives a calming effect to the whole house since it is seen mostly from all common areas of the ground floor."

Moving up to the first floor, the lounge space — connecting the bedrooms and a home theatre/bar — is fashioned as an open library with ladder-style vertical shelves on either side. Beautifully lit by the skylight (and overlooking the dining and 'mystic area'), it is marked by sleek furniture from China and an enormous custom-made wall clock of wood and metal. The home theatre and bar on this floor is another cosy nook to retreat to. Charcoal and fabric panels on the walls, along with the fabric-clad ceiling, not only provide the necessary acoustical advantage to the space but also give it a very distinct vibe from the rest of the house. The bar is distinguished with a contrasting palette of exposed brick laid in a unique pattern, metal pipes over the ceiling, industrial hanging lamp and grey overtones. "The materials are totally different than what we have used for the home theatre yet they gel well with one another and both spaces can be easily seen as one whole arrangement," says Manav.

When it comes to the bedrooms, each exhibits an exceptional juxtaposition of

ABOVE In the bar cum home theatre section, the charcoal panels in walnut shade not only enable good acoustics but also cleverly hide the powder room door. Note the interesting wooden globe small bottle storage (which opens automatically), with the world map embossed on its cover.

RIGHT The bar is distinguished in appearance with a natural green stone countertop and natural wooden planks as flooring. Exposed brick in a unique pattern, metal pipes over the ceiling and an industrial hanging lamp all add to its unique vibe.





materials. Take the master bedroom for instance where Belgium black Italian marble with yellow stone inlay adds a richness that is contrasted by Jaisalmer stone wall panelling as well as carved wooden strips placed diagonally over the bedside wall. A cast iron, wood and designer glass screen provides glimpses of a generous, linear study space — almost like a home office — designed keeping in mind the banker client's need to immerse in financial research.

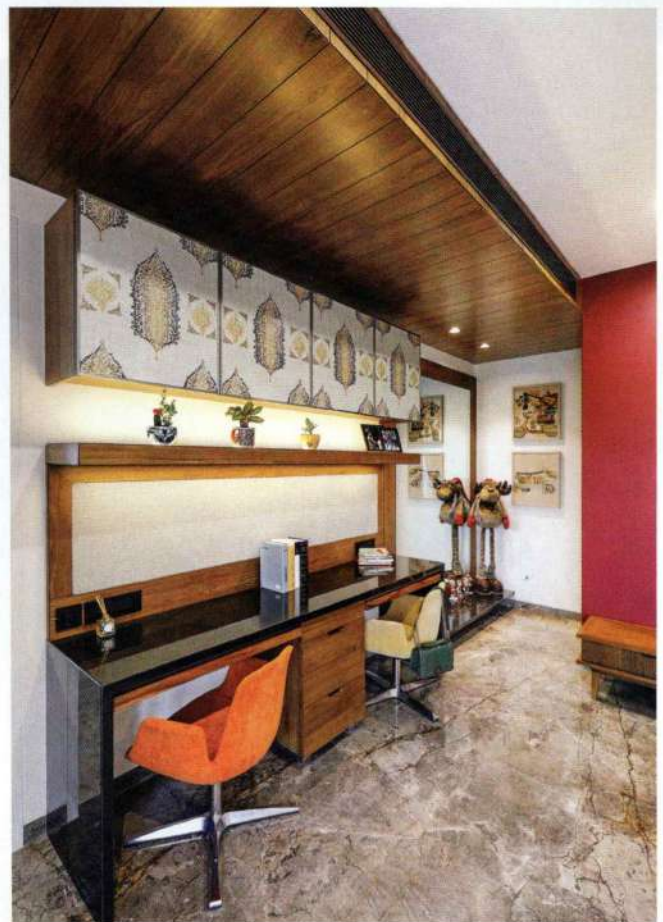
In the daughters' bedroom, the design is minimal but vibrant. A wooden poster bed overlooks the balcony, the neutral shade of the Italian marble Saren Calin on the floor blends well with the pop of colour on the wall and the fabric-sandwiched shutters above the study. The client's parents enjoy a bedroom marked with warmth. The bedside wall in particular is impressive, clad in various panels of wood and metal screens with a gentle illumination reflecting from the surface. A

MATERIALS

Floor Italian marble, wooden planks, leather finish black granite Walls Luster paint, neolith tile cladding, Jaisalmer stone cladding, exposed brick cladding Ceiling Wood, gypsum, fabric Partitions Metal, wood, glass Furniture Wood, stone

ABOVE For the daughters' bedroom, a modern princess-like appeal is created with a wooden poster bed which is offset by the Italian marble Saren Calin floor. Details like the bedside lamp from China continue the youthful narrative of the space.

RIGHT So that it can be easily maintained, the study table in the daughters' room is given a clean detail in black granite. However, the practicality is also combined with an aesthetic dimension with aluminium profile shutters that showcase printed fabric sandwiched between plain glass.





TOP LEFT The touch of grandeur in the master bedroom comes across prominently from the Belgium black Italian marble with yellow stone inlay. It serves as a fitting palette for the contemporary furniture and artwork sourced from China.

TOP RIGHT Since the client is a banker who spends significant time on financial research, the study area is kept intentionally generous — with details like the patterned wood ceiling adding a sense of beauty to the space.

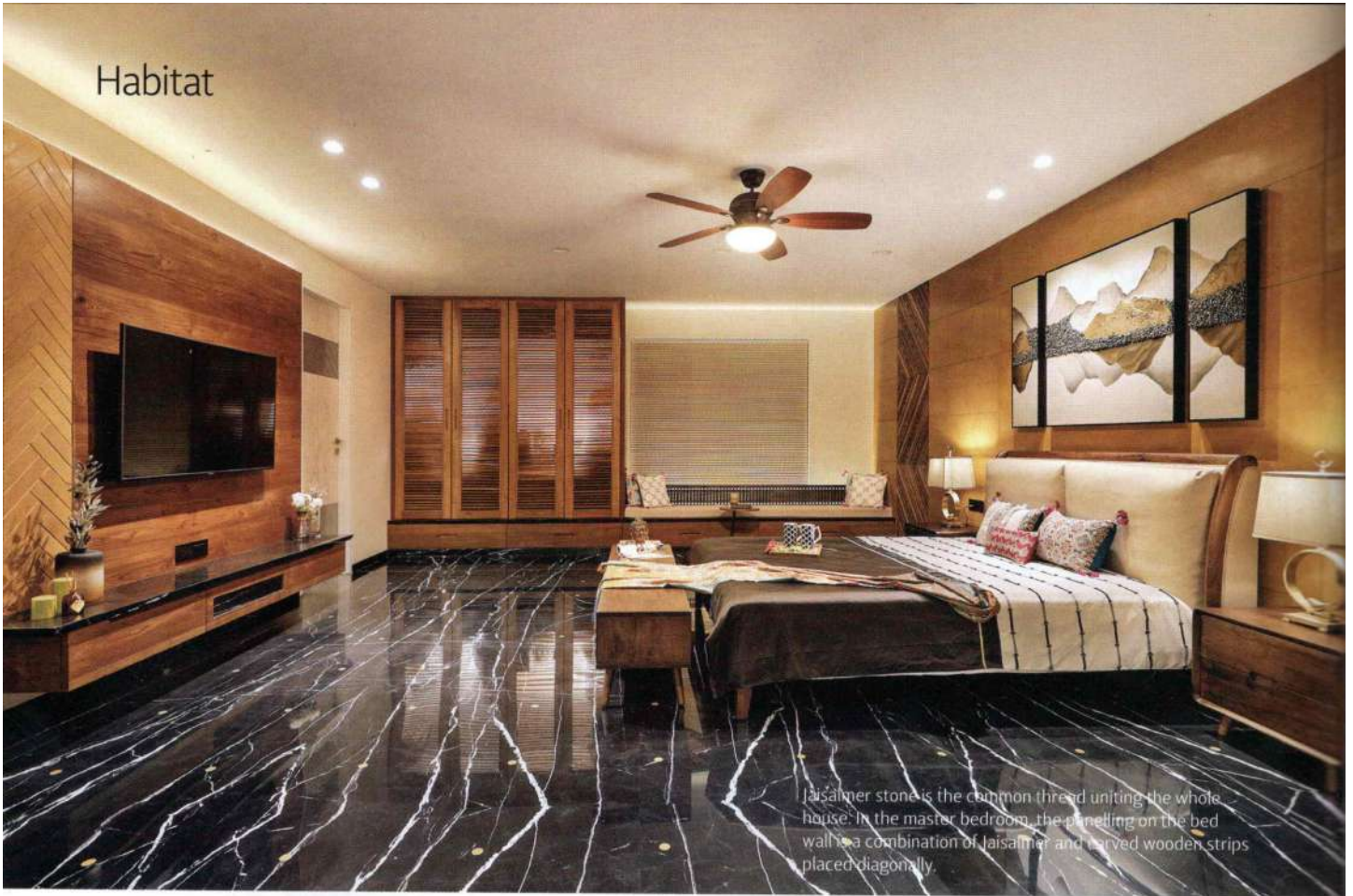
ABOVE In the parents' bedroom, a strong traditional visual is maintained. The wall behind the bed is a composition of wood panelling and metal screens that have minute slits on them, which highlights the area with a reverse light effect. To add colour and vibrancy, the central panels are covered in rich Banarasi silk fabric.

touch of tradition is provided through the central panels clad in Banarasi silk fabric.

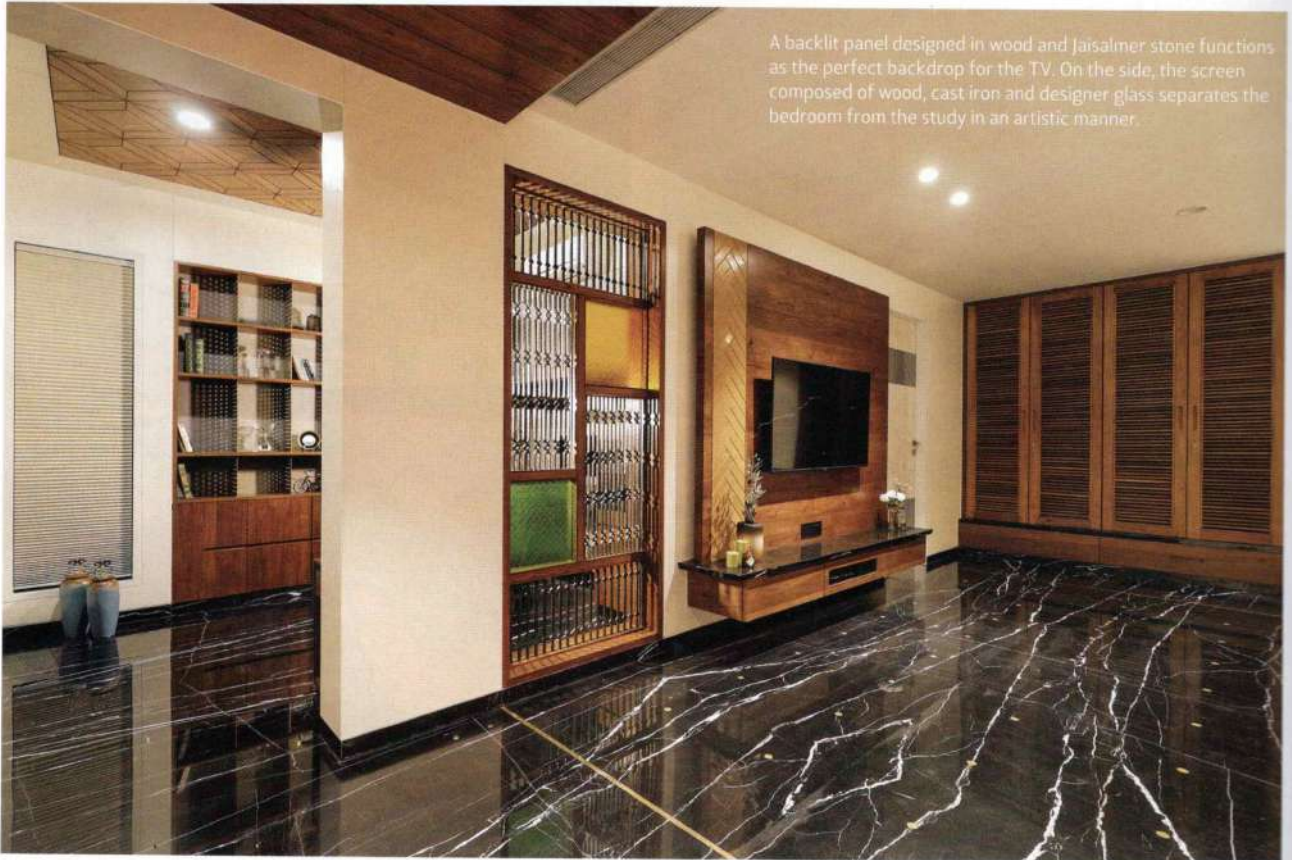
For a home saturated with design features and intricate interventions, you don't experience an assault to your senses here. Instead, you begin to appreciate the unique process of building a home that caters to diverse personalities. But more so, you acknowledge the innate desire of most Indian clients to surround themselves not with the overtly restrained interiors of the minimalist tradition but with warmth of the familiar Indian aesthetics — with the touch of the new of course. **BI**

FACT FILE: Project Dogra's Residence Client Dharmendra Dogra Location Sevasi Khanpur Road, Vadodara Area 5,500 sq ft Principal architect Shivangi Patel and Manav Patel Design team Ekta Kamdar, Deepika Khatri HVAC consultant Gayatri Trading (Jay Patel) Automation Lutron (Parth Shroff) Contractors Gopinath (paint), Pravin Suthar (stone work) and Sitaram (metal work) Carpentry Hiralal Mistry Site coordination Mittal Patel

Habitat



Jaisalmer stone is the common thread uniting the whole house. In the master bedroom, the panelling on the bed wall is a combination of Jaisalmer and carved wooden strips placed diagonally.



A backlit panel designed in wood and Jaisalmer stone functions as the perfect backdrop for the TV. On the side, the screen composed of wood, cast iron and designer glass separates the bedroom from the study in an artistic manner.